

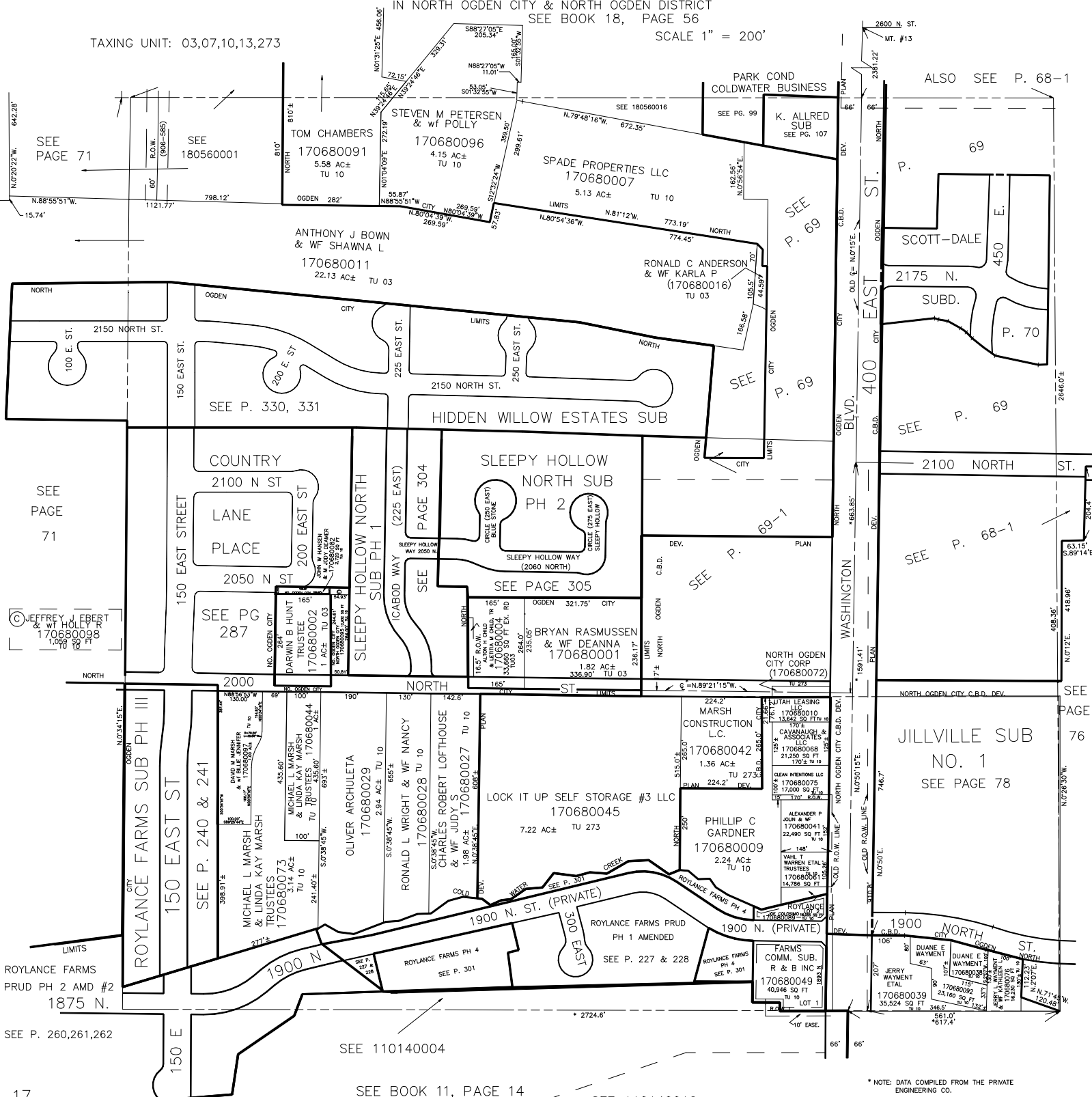
SECTION 32, T.7N., R.1W., S.L.B. & M.

IN NORTH OGDEN CITY & NORTH OGDEN DISTRICT
SEE BOOK 18, PAGE 56

SE 1/4

SCALE 1" = 200'

TAXING UNIT: 03,07,10,13,273



SEE PAGE 71

SEE PAGE 71

©JEFFREY J EBERT & WF HOLLY P
170680098
1.66 AC± TU 03

SEE P. 260,261,262

SEE 110140004

SEE BOOK 11, PAGE 14

SEE 110140012

ALSO SEE P. 68-1

SEE P. 69

SEE P. 69-1

SEE P. 69

SEE P. 68-1

SEE PAGE 76

JILLVILLE SUB NO. 1
SEE PAGE 78

* NOTE: DATA COMPILED FROM THE PRIVATE ENGINEERING CO.